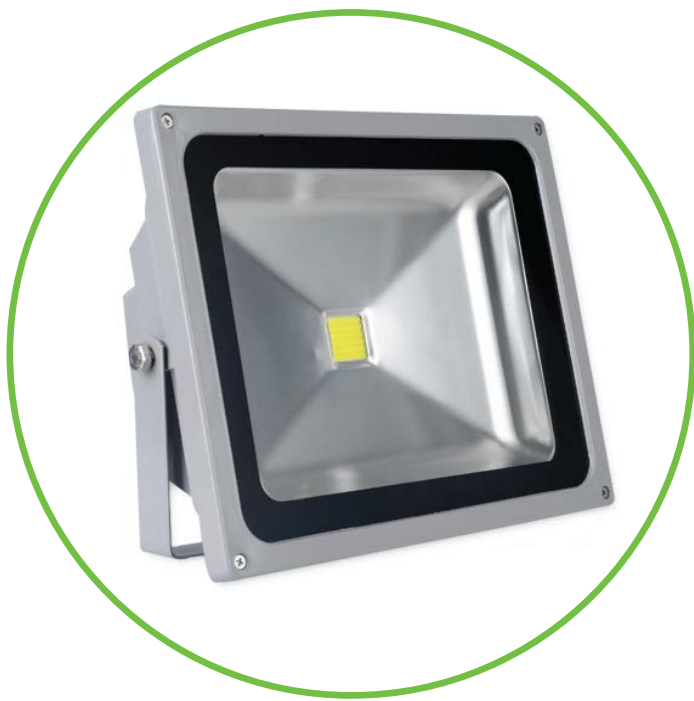


SPECTRA LED FLOOD LIGHT



Specification

| | |
|--------------------------|-------------------------------|
| Name | Spectra LED Flood Light |
| Actual Power | 50W |
| Input Voltage | AC85-265V 50/60Hz |
| Dimmable | No |
| Main Material | Diecasting Aluminum+Glass |
| Size | L288XW240XH140mm |
| Light source | LED MCOB |
| C.C.T. | 6000K / 7000K |
| Driver | ce certificate |
| Installation Accessories | w/plastic sleeve |
| Operating Temperature | -25°C~+50°C |
| Storage Temperature | -20°C~+40°C |
| Humidity | 10%~65% |
| IP Rating | IP65 |
| Warranty | 2 Years |
| CRI | ≥80 |
| Surface Finish | Gray Silver UV Powder Coating |
| Adjustable | YES |
| View | 120° |
| Min.Illuminated object | 100 LM/W |
| Approvals | CE/ROHS |
| Item Code 3000KWW | |
| Item Code 4000KNW | |
| Item Code 6000KCW | R5S1202 |



Mechanical Dimension

